

"Siam Observer"  
Oldest Established  
Daily Newspaper  
in Siam.  
Has the Largest  
Circulation.  
Subscriptions  
English Edition  
Tca. 50 per annum.  
Siamese Edition  
Tca. 25 per annum.

# The Siam Observer.

"Siam Observer"  
STATIONERY STORE  
STOCKS  
Account Books,  
Office Regulations  
and  
Stationery of  
Every Description.

FIRST DAILY TO BE PUBLISHED IN SIAM.

VOL. 43. NO. 17

BANGKOK SATURDAY JANUARY 20, 1917

PRICE 25 SATANGS

## STEAMER SAILINGS.

**K. P. M.**

**JAVA-SIAM LINE**

OF THE  
Royal Packet S. N. Co.  
(KONINKLIJKE PAKETVAART  
MAATSCHAPPIJ.)

**DIRECT SERVICE**

between Bangkok and Java.

Through Bills of Lading are issued  
for all Netherlands Indian and Australia  
Ports.

For rates of freight and passage  
please apply to:

DIETHELM & Co., LTD.,  
Agents

**British India Steam  
Navigation Co., Ltd.**

The s.s. "Mata Hari" is expected to  
arrive on Saturday 20th January to  
load for Singapore direct.

For rates of freight and other parti-  
culars etc.

Apply,—

The Bombay Burmah Trading  
Corporation Limited.

**BURNS-PHILP-LINE**

SINGAPORE-JAVA-AUSTRALIA  
(MONTHLY SERVICE)

CALLING AT

Batavia, Samarang, Sourabaya  
Port Darwin, Thursday Island  
Brisbane and Sydney via  
Torres Straits.

Through booking to all Ports in  
Australia and New Zealand.

For freight, passage, full particulars  
and Guide Books, etc., apply to

THE ARRACAN COMPANY, LTD.  
AGENTS

## Notice.

I, the undersigned beg  
to notify all customers  
and clients that my  
business is now located  
at the new building at  
the corner of Klong  
Poh Yome and Bang-  
rak

Ah Seang, Tailor.

**HARP HENG LONG**

We beg to inform the Public that  
we have just opened our shop in  
Jawarat Road, Nos. 104-109. We  
have received a large stock of Iron  
and Brassware, Paint and Oils, &c., &c.

House and Boat Builders and Con-  
tractors are invited to pay us a visit.

Our prices are very moderate and  
we allow a discount of 5 per cent on  
cash purchases

**HARP VOOR LONG & CO.**

Facing Sampeng Old Market, Jawarat  
Road, No. 184 to 189.

We have just unpacked a large ship-  
ment of our well-known High Glass  
Paints, Varnishes, Linseed, Oils, Brass-  
ware, Iron-ware, and Carpenter's, Black  
smith's, Silver smith's Tools, and  
various kinds of best Chinese silks  
always in stock.

INSPECTION INVITED. PRICES  
MODERATE.  
Tel. No. 535.

## NOTICE.

OUR ESTABLISHMENT

— WILL BE CLOSED ON —

Tuesday, January 23rd

FOR

CHINESE NEW YEAR.

Whiteaway Laidlaw & Co., Ltd.

## Peninsular and Oriental

Steam Navigation Company.

Full particulars as to

Sailing Dates,

Passage Rates,

Accommodation

&c., &c.

May be had on application.

Wireless Telegraphy Fitted on all Steamers.

All passengers holding through tickets will be met on arrival at Singapore by  
the Company's launch which will take over heavy baggage for shipment to the  
oncarrying vessel.

ROUND THE WORLD

Circular tickets are issued which allow of passengers proceeding to London  
via Suez, returning via America, or vice versa.

THE BORNEO COMPANY, LTD.

Agents.

**NIPPON YUSEN KAISHA.**

Japanese Mail Steamship Company.

Full particulars as to

Sailing Dates,

Passage Rates,

Accommodation

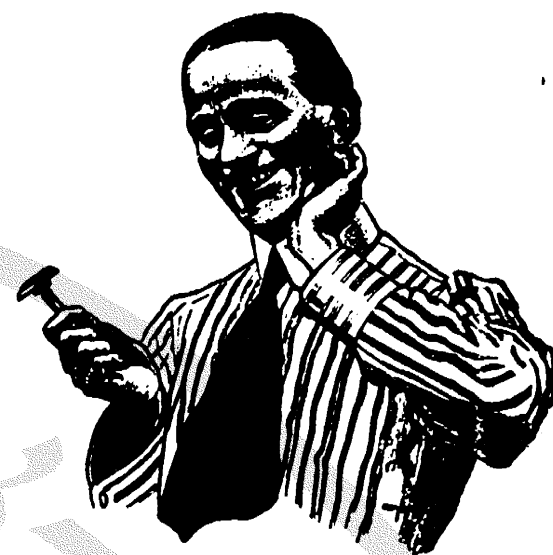
&c., &c.

May be had on application.

Round the World Tickets issued in either direction.

THE BORNEO COMPANY, LIMITED.

Agents.



## GILLETTE RAZORS

Standard

Nickelplated or Morocco Case.

Pocket Edition

Silver or Goldplated,  
and the new editions

Aristocrat and Bull dog.

**Gillette Blades**

Per doz. 2.65 nett.

LARGEST ASSORTMENT.

**Oriental**



**Store.**

TELEPHONE 647.

**THE EAST ASIATIC CO., LTD.**

Bangkok-Europe Line

m/s "Belandina" ... Arriving End of February 1917

THE SIAM STEAM NAVIGATION COMPANY, LTD.

(Incorporated by Royal Charter.)

West coast Mail Service.

For Koh Lak, Chumpon, Taku, Langsuen, Bandon, Lucot, Singora,  
Patani, Panarai, Telupin, Bangnara, Takbai, Kelantan, Becho, Semerak,  
Blaut, Tringganu, Kretay and Singapore.

Departures from Bangkok

s.s. "Asdang"	...	...	20.	1.	17.
s.s. "Boribat"	...	...	27.	"	"
s.s. "Prachatipok"	...	...	3.	2.	"
s.s. "Asdang"	...	...	10.	"	"

East Coast Mail Service

For Sriracha, Kohsichang, Koh Pai, Koh Pra, Rayong, Koh Samut,  
Chantaboon, Ban Yao, Krat and Koh Kou as per Sailing list.

s.s. "Chulalongkorn"	will leave Thursday 18	1	17	at noon.
s.s. "Krat"	" " Saturday 20	1	17	" "
s.s. "Chulalongkorn"	" " Tuesday 23	1	17	" "
s.s. "Krat"	" " Thursday 25	1	17	" "

All the steamers are fitted throughout with Electric light and have excel-  
lent accommodation for First Class passengers.

For Freight, Passage and Particulars apply to

THE EAST ASIATIC Co., Ltd.  
Managing Agents.



## BANKING COMPANIES

HONGKONG AND SHANGHAI  
BANKING CORPORATION.

PAID UP CAPITAL ... \$15,000,000  
RESERVE FUNDS.  
STERLING £1,500,000 @ 2/- \$15,000,000  
SILVER ... 18,000,000  
33,000,000  
TOTAL LIABILITY OF PROPRIETORS \$15,000,000

HEAD OFFICE.  
HONGKONG.  
CHIEF MANAGER.  
N. J. STABB.

## BRANCHES AND AGENCIES

Amoy Ipoh Peking  
Bangkok Johore Penang  
Batavia Kobe Rangoon  
Bombay Kuala Lumpur Saigon  
Calcutta London San Francisco  
Canton Lyons Shanghai  
Colon Malacca Singapore  
Fookow Manila Sourabaya  
Hankow Nagasaki Tientsin  
Hongkong New York Yokohama  
(Shanghai)

## BANKING AGENCY

INTEREST Allowed on current accounts at the rate of 1 per cent per annum on the daily balances.

FIXED DEPOSITS are received on terms which can be ascertained on application.

Letters of credit issued available in the Principal Cities of the world.

Drafts granted. Bills negotiated or sent for collection and every description of Banking and Exchange business transacted.

Office Hours - 9 a.m. to 3 p.m.  
Saturdays - 9 a.m. to 12 noon  
E. W. TOWNEND,  
Agent.

## Chartered Bank

OF  
INDIA AUSTRALIA AND CHINA.

INCORPORATED BY ROYAL CHARTER.

PAID-UP CAPITAL ... £1,200,000  
RESERVE FUND ... £1,800,000  
FURTHER LIABILITY OF PROPRIETORS ... £1,200,000

## COURT OF DIRECTORS.

Sir Montagu Cornish Turner, (Chairman)  
Sir Henry S. Cunningham, K. O. I. E.  
Thomas Cuthbertson, Esq.  
Sir Alfred Dent, K.C.M.G.  
William Henry Neville Goschen, Esq.  
The Rt. Hon. Lord George Hamilton, G.C.S.I.

W. Foot Mitchell, Esq.  
Lewis Alexander Wallace, Esq.

Current Accounts are opened and interest allowed at 1 per cent. per annum on the daily balances.

Deposits are received for fixed periods at rates which can be ascertained on application.

G. B. ABLEN,  
Agent.

Bangkok, July 1, 1909.

## BANQUE DE L'INDO-CHINE

Societe Anonyme au Capital de 48,000,000 de Francs.

## COURT OF DIRECTORS.

M. Baron Hely d'Olives, Chairman,  
M. A. de Monplaisir, Deputy Chairman.

M. E. Bethenot M. P. Boyer  
M. P. Desvaux M. A. de Germiny  
M. H. Guernant M. Georges Louis  
M. L. Masson M. A. Rostand  
M. Edgar Stern M. R. de Tregomain  
M. Stanislas Simon

Managing Director—M. Stanislas Simon  
Joint-Manager—M. Rene Thion de la Chaume  
Government Supervisor—M. Demartial

## London Bankers.

The Union of London & Smiths Bank, Ltd.  
Comptoir National d'Escompte de Paris.

## Bangkok Agency.

Current Accounts are opened and interest allowed at 1 p.c. per annum on the daily balances.

Deposits are received for fixed periods at rates which can be ascertained on application.

C. HENRY, Manager.

## Branches and Agencies.

Bangkok ... Pnom-Penh  
Battambang ... Pondicherry  
Canton ... Saigon  
Haiphong ... Shanghai  
Hankow ... Singapore  
Hanoi ... Papeete  
Hongkong ... Tientsin  
Noumea ... Tourane  
Montze ... Djibouti  
Pekin

## CURE THAT COUGH.

When you have a troublesome cough it does not mean that you have consumption or that you are going to have it, but it does mean that your lungs are threatened, and it is just as well to be on the safe side and take Chamberlain's Cough Remedy before it is too late. For sale by British Dispensary.

## BANKING COMPANIES

## The Siam Commercial Bank Ltd.

(Incorporated by Royal Charter.)

PAID UP CAPITAL  
TIGALS 3,300,000

## BOARD OF DIRECTORS.

E. Florio, (Chairman), Phra Boribun  
Phya Boribun Raja Kosakorn  
Sombat Luang Rit  
Phya Jaiyos Sombati Narongron,  
W. Brehmer, Esq.  
A. Willeke, Esq.

London Bankers—Direction der Disconto Cassellechaft, Swiss Bankverein.

The Institution buys, sells, and collects Bills of Exchange on Europe, India, and China and transacts every description of Exchange and Banking business.

Current Account Deposits at 1% on daily balances.

Rates of Interest allowed on the fixed deposits may be ascertained on application.

Safe-Deposit Lockers let to the public at monthly rental.

Office hours ... 9 a.m. to 3 p.m.  
Saturdays ... 9 a.m. to 12 noon.

A. WILLEKE,  
Actg. Manager,

Bangkok, March 27, 1909.

## BANGKOK LIBRARY.

Suriwongse Road

(Near the Lawn Tennis Club.)

Open daily, Sundays excepted.  
Sept. 1st to Feb. 28th—4 to 6.30 p.m.  
March 1st to Aug. 31st—4.30 to 7 p.m.

Annual Subscription Tcs. 20

Half yearly Subscription Tcs. 12

Quarterly do do 8

Monthly subscription Tcs. 3 for visitors only, who will be required to deposit Tcs. 5.

Subscriptions, payable in advance, date from day of payment, and may be handed in at the Library any time in the year or sent to

MRS. GITTINS,

Hon. Secretary and Treasurer.

## Notice.

Gentlemen who in leaving the country are requested to call or write to the undersigned who is prepared to take over at reasonable prices Household Articles, Furniture and other effects, for prompt cash.

D. FROIMAN,

No. 138, Si Phya Road,

Second-Hand Furniture Store.

(Next to Whiteaway Laidlaw & Co., Limited)  
t.f.n

## Godown Wanted.

6,000 sq. feet or larger, in the neighbourhood of Rachawongse Road.

Apply to:—

"P."

c/o. Siam Observer

## Just Imported.

MUSIC BOOKS.—Piano, Violin, Mandolin, and Guitar instructors, Sheet music, Songs, Dance albums etc.

CAMPS BEDS.—Light weight, with spring wire mattress.

RAT TRAPS.—Plague preventives.

DECK CHAIRS.—Hammock canvas pattern.

ELECTRIC LAMPS.—For desk or table reading use.

KITCHEN SUNDRIES.—Every kind.

FURNITURE FITTING.—Every kind.

Apply,—

E. M. PEREIRA & Co.

## MARTIN'S

APRIOL & STEEL PILLS

A French Remedy for all Irregularities. Thousands of ladies keep a box of Martin's Pills in the house, for the first sign of any irregularity of the system a timely dose may be administered. Those who use them recommend them, hence their enormous sale. At all Chemists and Stores, or post free to MARTIN, CHAM, SOUTHAMPTON, ENGLAND.

## Notice.

The undersigned Exchange Banks will be closed to Public Business on Tuesday 23rd, Wednesday 24th and Thursday 25th instant respectively being China New Year holidays.

For the Hongkong and Shanghai Banking Corporation.

E. W. TOWNEND,  
Actg. Agent.

For the Chartered Bank of India Australia and China.

G. E. ALLEN,  
Agent.

For the Banque de l'Indo-China Agency in Bangkok,

CAMILLE HENRI,  
Le Directeur.

19—22

## Notice

Our office and factories will be partially closed on Tuesday and Wednesday, the 23rd, and 24th, instant (Chinese New Year), and on those days no deliveries except the regular supplies of ice will be made.

Bangkok Manufacturing Co., Ltd.

19—20

## Notice.

On account of Chinese New Year our Store will be closed from 3 p.m. Monday the 22nd till Thursday morning the 25th inst.

Respectfully  
ORIENTAL STORE.

19—20

## TIDE TABLE.

DEPTH OF WATER ON THE  
BANGKOK BAR.

FOR Jan., 1917.

Jan.	A.M.			Feet.
	H. W.	Ft. & in.	L. W.	
16	9 00	15 1	...	...
17	9 00	14 11	...	...
18	8 30	14 4	...	...
19	7 00	14 5	...	...
20	6 30	15 5	...	...
21	6 30	15 10	...	...
22	6 30	15 2	...	...
23	7 00	15 11	...	...
24	7 00	15 10	...	...
25	7 30	15 7	...	...
26	8 00	15 3	1-0	7-0
27	8 00	15 0	1-2	7-0
28	8 00	15 3	2-0	7-0
29	8 30	15 1	2-0	7-8
30	8 30	14 9	1-0	7-8
31	8 30	14 9	2-0	7-8
Feb. 1	8 00	14 7	...	...
2	8 00	14 3	...	...
3	8 00	14 5	...	...
4	6 00	14 10	...	...
5	6 00	15 2	...	...
6	6 30	15 5	...	...
7	6 30	15 8	...	...
8	7 00	15 5	...	...
9	7 00	15 4	...	...
10	7 30	15 2	...	...
11	7 30	15 2	...	...
12	7 30	15 1	1-0	7-0
13	7 30	15 0	1-2	7-0
14	8 00	14 8	2-0	7-0
15	8 00	14 6	...	...

Jan.	P.M.			Feet.
	H. W.	Ft. & in.	L. W.	
16	10 00	12 3	5-6	8-0
17	...	...	7-8	7-8
18	...	...	8-9	7-0
19	...	...	8-9	7-0
20	...	...	10-11	7-0
21	...	...	11-0	7-0
22	...	...	12-0	7-0
23	3 30	12 11	12-0	7-0
24	4 00	13 2	12-0	7-0
25	5 00	13 1	12-0	7-0
26	6 00	13 4	...	...
27	6 30	13 5	...	...
28	7 00	13 5	...	...
29	8 00	12 13	...	...
30	9 00	12 8	...	...
31	10 30	12 6	...	...
Feb. 1	11 00	12 6	4-5	7-0
2	...	...	5-6	7-0
3	...	...	5-6	7-0
4	...	...	6-7	7-0
5	...	...	6-7	7-0
6	...	...	9-10	7-0
7	3 30	12 8	10-11	7-0
8	4 00	13 1	11-12	7-0
9	5 00	13 6	12-0	7-0
10	6 00	14 1	12 0	7-0
11	7 00	14 0	...	...
12	8 00	13 10	...	...
13	9 30	13 7	...	...
14	10 00	13 3	2-3	7-0
15	11 00	13 4	2-3	7-0

## PHASES OF THE MOON.

Feb. 7th 0 Full Moon 10.10 a.m.  
" 15th (Last Quarter) 8.35 a.m.  
" 22nd 0 New Moon 0.51 a.m.  
" 28th 1 First Quarter 11.26 p.m.

## German Finances.

By a study of German finances (written by a Dutch correspondent) it is not difficult to understand why Germany is so eager for peace and why she tries to achieve it by all means at her disposal—doing her best to sow distrust between the Allies as her last trump.

According to all declarations, official and private, which reach this country, German war expenses are a little over £100,000,000 a month, which will make about £1,250,000,000 a year. The war loans of 1916, including the last have brought about £1,050,000,000. Thus about £200,000,000 is lacking. The just voted sum of £600,000 will cover but a little part of this enormous deficit. It is true that Treasury bonds will for a time cover the deficit. But as the well-known Swiss economist, M. Cellerier, rightly remarks in the "Journal de Geneve," it will not be sufficient.

The working of the German war finances shows with what care and foresight the Government, organised this part of their war machine before the war. The War Treasury covered the expenses at the beginning of the war, later on current expenses were covered by the Treasury bonds, with war loans issued periodically, converted these bonds into longdate ones and thus made provision for the continuation of the war.

For seventeen months this formidable war machine worked without fail. But expenses have exceeded all calculations. Thus Professor Rissler, author of the classical work on the war finance, "Financielle Kriegs-wirtschaft und Kriegs-berettschaft," and the inspiring genius of a series of measures connected with the mobilisation of industry, trade, and credit a year previous to the outbreak of war, gave it as his opinion that a war carried on by Germany on two fronts would cost less than £350,000,000.

At the beginning of 1916 the financial equilibrium was broken. The funds collected in April, could only guarantee in advance the continuation of war for two months. The war loan of October can pay only expenses incurred before that date. The year 1917, will thus begin with an approximate deficit of £200,000,000, and to keep the war going until April, 1917, Germany will have to issue Treasury bonds for about £650,000,000. At this moment the war will have cost Germany approximately £28,000,000,000.

Will she be able to get another loan then, which must be much larger than all the preceding ones? Even if she could succeed, which is highly improbable, where will she get the £300,000,000 from necessary to cover the expenses for the year? She is in a precarious position. She cannot, like the Allies, draw from the wealth of the universe.

That is why German statesmen already begin to look for peace.

## Rumania's Ordeal.

London, Jan. 9.—The correspondent of the Times at Jassy says that it is undoubted the Germans are aiming at the immediate occupation of the whole of Rumania, despite the inclemency of the weather. They are bringing up new troops and pressing their attacks with extraordinary violence.

London, Jan. 10.—Wireless. German Official. The Russo-Rumanians failed to recapture the positions in the Susita valley. We pressed back the enemy north and south of the Kasino valley, taking in two days six officers and 900 men. We gained a foothold on the left bank of the Putna river, north of Focsani, and made progress behind the Putna between Focsani and Fudeni. We forced the enemy beyond the Soreth and took 550 prisoners, and continued our progress at the mouth of the Rimnicul Sarat.

London, Jan. 10.—Wireless. Russian Official. Eight attacks on the heights north of Kasino failed. The enemy pressed back the Rumanians south of Kekoza but a counter-attack regained the position and 279 German prisoners.

## A Jeddah Ceremonial.

Cairo, Jan. 9.—King Hussein of the Hedjaz visited the Allied warships at Jeddah, where he was welcomed by the Commander of a French cruiser. His Majesty expressed his pleasure at visiting the brave and heroic Allies who had proved their virtues to the world and merited all respect and honour. He also visited British cruisers, and addressed Indian sailors in Arabic and spoke words of counsel to them.

## THE RAINFALL.

Rainfall for the 2nd week in January 2459

Locality.	Rainfall recorded during the week.	Rainfall of correspond-ing week of last year.	Total rainfall for present year to date.	Total rainfall for last year to correspond-ing date	Remarks.
	Millimetres.	Millimetres.	Millimetres.	Millimetres.	
Ministry of Agriculture	...	None	1141.1	1233.6	
Dhanyaburi	...	None	977.5	1253.3	
Samudprakar	...	No report	...	1372.6	
Krung Kao	...	None	1214.8	1073.5	
Angtong	...	No report	...	1450.3	
Loburi	...	None	1508.6	1269.0	
Jainart	...	None	1414.6	1272.2	
Udaidhani	...	None	1475.1	1446.2	
Bisnuloke	...	None	1809.1	1471.4	
Xbaxerungao	...	None	1257.8	1213.1	
Prachin	...	No report	...	1550.4	
Nagor Pathom	...	None	1458.9	1564.3	
Rajburi	...	None	1229.7	1256.0	
Xiaaraburi	...	None	1761.5	1722.4	
Bejngmai	...	None	1401.6	863.9	
Singora	...	11.1	48.8	1780.0	2137.2



**B. GRIMM & Co.**

## NOTICE.

We beg to inform the public that we have this day taken over all the valuable stock of Jewellery and Sundries together with the workshop of the wellknown firm of

**Messrs. F. Graehlert & Co.**  
Gold & Silversmiths.

The business is being transferred to our premises at Pratu Samyot, 1st floor. It will be carried on as heretofore under the same skilful management assisted by the same old expert staff.

We are thus now in a position to execute promptly on the spot any orders which may be entrusted to us at moderate prices.

Bangkok, 15th January, 1917.

**B. GRIMM & Co.,**  
Pratu Samyot.

TELEPHONE 244 OR 235.



## On the Bridge at Tzernovada.

### Cholera Microbe Bomb.

Taken for a boy and given an evil smelling fish to eat and a cigar to smoke, Miss Helen Monfris, a Scotswoman, helped the Rumanians to repair the bridge at Tzernovada after it was bombed by German aeroplanes.

"It was during the Rumanian retreat," she explained to a representative to The Observer. "I was acting as an interpreter and a chauffeur to the transport column of Dr. Elsie Inglis's section of the London Unit of the Scottish Women's Hospitals. We had got to Tzernovada with the wounded, and I left the train to get them food.

"I had just got some loaves of bread when I saw the train starting off at full speed. I looked overhead and saw the reason—an aeroplane. The train was gone, the railway officials dashed away, and I was left alone.

"A bomb dropped just where the train had been standing fifty yards away from me. The concussion threw me to the ground and a splinter caught me on the knee. Three empty carriages were standing on the line. I got into one of them for shelter. Another bomb dropped and shattered the second carriage from me. Four bombs dropped on the bridge and tore away part of the line. Nine others fell in the water and made enormous wells, forcing the soil up to the surface.

"As soon as the attack ceased I set to work with the railwaymen and after four hours we managed to join up with pieces of wire the broken line. It was then that, taking me for a boy, owing to my short hair and the breeches I was wearing, they gave me a cigar and an evil smelling fish which, though very hungry, I had to thrust into my pocket, and sent me across the line on a rickety petrol engine to the other side, where the train with the wounded was still waiting.

"Two hours later part of the bridge was blown up—not, I was told, by the Rumanians, but by the Germans themselves, who sent their aeroplanes back again to destroy it."

This was not Miss Monfris's only experience under bombardment from the air. She was in a hotel in Constantza during a raid in which 75 persons were killed and 250 injured. A day or two before this raid a German aeroplane dropped a proclamation saying that 100 aeroplanes were coming to devastate the port. The number which actually took part in the attack was 17. Two bombs dropped close to the hotel, shattering the glass and setting fire to the woodwork. Just as she was going outside to see if anything could be done to help the injured the hotel-keeper shouted, "Don't go out; shut the door."

"An awful crash," she said, "followed. Four bombs dropped in the gardens opposite the hotel, killing five women who were in the grounds and three cats that had been on the roof. Three Russian sailors who were injured, I afterwards drove to the hospital, after giving them first-aid treatment. It was in this raid that two petrol tanks belonging to the American Standard Oil Company were struck and five houses adjoining them were set on fire. A grain factory was hit and was blazing for three days.

"At Bucharest, where I met M. Juanesco, poisoned sweets and toys were dropped by German aeroplanes, and one bomb contained microbes of every virulent disease—cholera, diptheria, scarlet fever and typhoid. M. Juanesco was present at the analysis of the contents. The sweets were like satin pralines and were made of chloride of lime. Many children ate them and died.

"One morning a glittering pencil case lay in the street. A soldier saw it and picked it up. He was unscrewing the metal when it exploded and three fingers were blown off.—Ex.



## Notice.

Notice is hereby given that Tuesday & Wednesday the 23rd & 24th instant (Chinese New Year) will be observed as Holidays in the Customs Service.

By Order of the  
DIRECTOR GENERAL.  
Custom House,  
16th January 1917.

6 22

## LOTTERY.

IN AID OF THE

## FRENCH RED CROSS.

First Prize One Ford Car,  
20 H. P. 4 CYL. 5 SEATER

With all Accessories Including  
Electric Light.

Over One Hundred Other  
Prizes

Which are on show at the International Store.

Tickets Sold at:

BANQUE DE L'INDO-CHINE,  
INTERNATIONAL STORE,  
PHARMACIE FRANCAISE  
BRITISH DISPENSARY,  
HARRY A. BADMAN TOWN STORE  
BUAN SOON LEE & CO.  
KIAM HOA HENG & CO.  
SIAM STAMP CO.

## To Let.

Spacious Godown on Westbank of River at Took Mai suitable for Rice, Produce, etc.

Apply to:—

"S."

c/o Siam Observer.

## To Let.

Buildings & yard in Unakarn Road to let—Main Building 18x12 metres suitable for Carpenters Shop, godown or could be adapted for Cinema Theatre.

Apply: "A. B."

c/o "Siam Observer"

t.f.n

## Motor-Cars for Hire.

I beg to inform the Public that I have in my garage

Several Motor-Cars in Good Condition and Order for Hire at all hours Day and Night.

Also Motor-Cars can be had on hire monthly at a very Moderate Charge. Arrangements can be made with the Manager who will call at any residence on being requested to do so.

ARBIB SHAH,

Opposite Europe Hotel,  
New Road.

Telephone No. 687.

24 O.—25 Jan.

Repairs

Repainting

Reupholstering

Siam Motor Works Ltd.

Motor

Accessories

of all kinds.

## HAND MASSAGE.

An ingeniously made massage ready for use at any moment. Come and see it at our shop.

### Prices.

Tes. 7 First quality

" 5 Second "

S. IKESAKI, Tapan Mon.

## To Let.

1. House, small grounds. Low rent.
1. House, large compound, at Klong Toi.

Apply:—

"V. S."

c/o Siam Observer.

6-19

## Oriental Bakery.

ORIENTAL AVENUE.

Daily supplies of white bread & rolls.

Fresh Cakes:—Plain, Currant, and Assorted tea cakes.

Other cakes made to order.

Brown bread every Wednesday & Sunday.

## KWONG ON CHEONG

HIGH CLASS TAILOR,

Opposite Oriental Avenue on the NEW ROAD.

Executes all kinds of Tailoring in the latest fashions.

Send Post Card, and he will wait on you personally.

## Notice.

Advertisers are kindly requested to send in changes of advertisements before 11 a.m. of the day they intend the advertisement to appear. Should any advertisement arrive after that hour the same will be held over for the next day.



BY ROYAL PATRONAGE

The "SWAN"



## Fountain Pen

We recommend the "SWAN" because—

It is the simplest and strongest pen

It gives the least trouble

It has no complicated mechanism

It will not leak

It writes with equal flow of ink at any time

Thus ensuring a lifelong satisfaction.

Prices ranging from Tes. 8-00 upward.

A COMPLETE ASSORTMENT AT

Kiam Hoa Heng & Co., Ltd.

TELEPHONE 180.

## FIAT MOTOR CARS.

### NEW MODELS 1917.

Including:

Mod. 62, 4 cylinder 10-12 H.P.

" 70, 4 " 15-18 "

" 85, 4 " 25-30 "

" 65, 12 " 40-50 "

All models fitted with electric light and self starter.

A consignment of mod. 62 (4 seater and 2 seater) and mod. 70 will arrive shortly.

G. KLUZER & Co.

SOLE AGENTS FOR SIAM,

## IT STANDS TO REASON

that the best proof of the excellence of any medical preparation is its continued popularity. Beecham's Pills have been before the public for upwards of half a century, and it is acknowledged that they are, now, in greater demand than ever. Their enormous sales are still on the increase. No medicine could achieve such a remarkable success unless it had proved itself to be of very real worth and practical value.

## Beecham's Pills

have justified public confidence. In thousands of homes, to-day, experience has proved the beneficial results obtained from the use of these pills in cases of biliousness, sluggish liver, impaired digestion and a disordered condition of the bowels. It is a safe and prudent thing should you feel "out-of-sorts" to rely upon the curative properties of this excellent preparation. You will speedily find that Beecham's Pills

WILL DO YOU GOOD.

Sold every where in boxes, price 9½d (36 pills) 1/1½d (56 pills) & 2/9 (168 pills).





### Royal Turf Club of Siam

In future all sums payable to the Club should be addressed to the Hon. Treasurer of the Royal Turf Club of Siam c/o. The Siam Commercial Bank, Ltd.

By order of the Committee  
PHYA MEDHA  
Hon. Secretary.  
20, 23 25

### Notice.

Our premises will be closed on the 23rd 24th & 25th inst. inclusive on account of the Chinese New Year.  
KIAM HOA HENG & Co. Ltd.  
20-22

### Notice.

On account of the Chinese New Year the Siam Commercial Bank, Ltd., will be closed to public business on Tuesday, Wednesday and Thursday the 23rd, 24th & 25th January, 1917.

The Siam Commercial Bank, Ltd.  
A. WILLEKE,  
Actg. Manager.  
20-22

### Notice.

The departure of the s.s. "Asdag" has been deferred till Monday noon.  
The Siam Steam Navigation Company, Ltd.  
20

### Wanted.

An assistant for a newspaper office, able to write paragraphs and make himself generally useful.  
Apply in person  
to MANAGER,  
Siam Observer.

### Notice.

CONSIGNEES OF GOODS:—  
Ex s/s "Antiochus" and Balances ex s/s "Benrinnes", "Knight Companion", "Ping Suey", "Pelene" and "Ningchow", are hereby notified that same have arrived per s.s. "Katong" on 18th inst., and will be landed and stored at our Wharf at the risk, expense and responsibility of consignees.  
No Claim will be entertained unless made within 10 days after final discharge of the steamer.  
Goods not cleared within 3 days after final discharge of cargo will be liable for go-down rent.

BORNEO CO., LIMITED.  
Agents.

### Notice.

Fraser & Neave, Ltd. beg to notify that their premises will be closed from 1 p.m. on Monday 22nd until the morning of Thursday 25th inst.  
18-20

## Expanded Metal

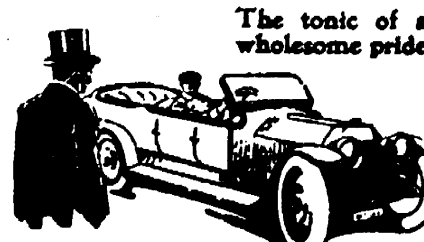
made from best *British Steel*  
various sizes and sections in Stock.

## Milners' Safes

Patent fire and thief resisting.  
several sizes in Stock.

Bangkok Dock Co., Ltd.

SOLE AGENTS FOR SIAM.



The tonic of a wholesome pride

### C.A.V. CAR LIGHTING AND STARTING

is run from one battery and controlled by the touch of a switch. A perfect finish of every particular is characteristic of a C.A.V. set, and gives just that touch of distinction which is indispensable to the owner who takes a genuine interest in the perfect appointment of his Car.

The ONE SYSTEM which is a simple perfect because it is perfectly simple  
WRITE FOR FULL PARTICULARS  
Siam Electricity Co. Ltd., Bangkok.

C.A.V. LONDON, ENGLAND

### The Siam Observer

SATURDAY, JANUARY 20, 1917.

### POLITICIANS, STRATEGISTS AND INVENTORS.

Some of the questions of the hour in the British Press refer to politicians, strategists and inventors. It has been said soldiers are excellent in their places, but according to old British principle it is the civilian minister and not the professional soldier who has charge of the war policy of the nation. A "Times" leading article not so very long ago on the Rumanian problem said: "There has plainly been the same want of co-ordination between strategy and politics which has been the blight of all the allied operations in the Near East." If this means anything it means that the well laid schemes of soldier strategists have gone wrong owing to the interference of politicians. The recent employment not only of civilian war councillors, but even heads of firms to seats in the Government demonstrates that the opinion of those in power in Great Britain tends to uphold the old British principle. On the other hand it is said that in Germany Hindenburg is all powerful and that it was he who displacing Falkenhayn and the Crown Prince overcame even the Emperor in staying the offensive on the West and carrying it on with vigour in the East. Time perhaps will show the difference between a war directed by politicians and one planned and directed solely by soldier strategists. An English member of Parliament writing recently points out the necessity of fresh minds for the great problems of the war and also of the value of civilian thought as applied to civilian matters. He states that great inventions and improvements have arisen in the minds of people coming fresh to a subject, and that one of the most valuable of trench warfare instruments now in successful use has been the invention not of a soldier or a scientist but of a lowly agricultural implement maker. He calls upon his countrymen who are engineers to think out some new method of defence for the protection of men advancing to attack as in this protection lay the key to swift victory. The war, he says, has reached the factory stage where new machinery has to be devised for the protection of men sent over the parapet, which will give them some greater security than that afforded by the soup-plate helmet.

### Buddhist Monk Murdered.

It is reported that last night thieves entered the Wat Janawa grounds in the Bantawa district and got into a room occupied by an aged monk Phra Samon Nin, who was currently reported to have had valuable collections with him. He was found dead in the morning with his hands and feet bound. It is thought that death was due to strangulation.  
So far the Police have not been able to trace the murderers.

### The Late Than Pujing Eam.

His Majesty the King has been graciously pleased to telegraph condolences to H. E. Chao Phya Abhai Raja on learning the sad news of the late Than Pujing Eam's demise, expressing His Majesty's personal grief and stating the high appreciation of integrity and patriotism. The Ministry of the Household at Bangkok was telegraphed to by Royal Command to supply a "Kosatha Toh", a golden urn for the remains, a mark of very high honour very rarely granted.

### The Protestant Church.

The following is the Committee's report for the year ended December 31st 1916:—

The Revd. H. Hillyard left Bangkok on leave at the end of March, and for the remainder of the year the services at Christ Church were carried on by the Revd. C. R. Simmons. The community are under a great obligation to Mr. Simmons who has spared no trouble in this voluntary undertaking.

The thanks of all are due to Mr. F. G. Traves, Hon. Choirmaster, and all the members of the Choir for their loyal services during the past twelve months, at the end of which period Mr. Traves definitely resigned his position. On his retirement, he wrote to the Committee as follows:—

"In bringing to an end my official connection with Christ Church, in which I think I have held the post of Choirmaster for a longer time than any one else, I wish to acknowledge publicly my great indebtedness to all the ladies and gentlemen who, at various times since 1911, have by their devotion to the work, and loyalty to me, rendered great service to Christ Church and the music performed there."

As regards Mr. Traves himself, the Committee wish to put on record, their appreciation of the very valuable service which he has rendered to the Community in his capacity as Choirmaster, by his unfailing energy and untiring efforts in the interests of the Choir in his charge. The Committee are pleased to state that Mr. G. H. Ardron has agreed to take Mr. Traves' place.

Special thanks are also due to Mr. Brearley for his work in connection with the church organ, to which he has devoted a lot of time and trouble. He has not only fulfilled the duties of organist, but has also given the care of the instrument itself his particular attention, and in this connection, the Committee regret to have to report that the condition of the organ is at present far from satisfactory. Owing to unforeseen circumstances, the whole structure has during the 10 years since its erection, become strained, and as in addition, all the perishable parts require renewal, it is advisable that the instrument should be thoroughly overhauled and repaired without delay. These repairs will probably prove costly, but as they are essential if the instrument is to be saved from complete ruin, the Committee feel confident that a generous response will be forthcoming to the appeal for special donations which they will shortly make.

A supply of combined Prayer and Hymn Books have been provided for public use, and are now always available at the foot of the Church. The Committee have to thank Mr. Traves for having defrayed a part of the cost of these.

### LOCAL AND GENERAL.

TO DAY'S telegrams appear on page 8.

A LARGE number of Wild Tiger Scouts left to-day for Nagor Pathom for the annual manoeuvres.

ACCORDING to the "Daily Mail Year Book" over sixty German submarines were sunk up to October 31st last.

THE following passengers are leaving by the s.s. *Katong*: Mr. F. Campbell, Mr. C. B. Follett, Mr. Hilton, Mr. H. W. Bart and Mr. W. Chivers.

THE Phathanakorn has a special programme for the Chinese New Year the chief attraction being the film "Sut Choo Pao" in which real Chinese actors and actresses take part.

THE drawing in the lottery in aid of the French Red Cross will take place on Saturday the 27th inst. at 4.30 p.m. at the Assumption College examination hall. A few tickets are still for sale at the International Store.

### IN STOCK B.M.C. TO-DAY.

FISH  
Dried Cod  
Codroe Caviare  
Haddock  
Bloaters  
Kippers

Boiled Ham on cut  
French Ham "  
Raw Ham "  
Breakfast Bacon

CHEESE  
Roquefort  
Australian  
Stilton  
Cheddar (English)

Fresh Australian Butter and Best English Margarine  
Pure Beef Dripping in 2lb Tins.

Picnic cases containing Ice, Aerated Water and Well Water for travellers by Railway or boat delivered free at Railway Station or any Bangkok landing.



BY  
APPOINTMENT  
TO  
H.M. THE KING and H.M. THE QUEEN MOTHER



S. A. B.  
JUST ARRIVED  
A SELECTED STOCK OF  
Icy Hot Bottles

Perfect Construction  
Highest Efficiency

Keep Contents icy cold three days or steaming hot 24 hours.  
Various Prices and Sizes.



### Take One With You

HERE is a portable detachable motor that fits any rowboat and in less than one minute turns it into an eight mile an hour motor boat. You can carry it everywhere as it weighs but 50 lbs. You can enjoy the pleasure of motor boating wherever you go if you like it.



Handsome illustrated book will be given away free. All motors are guaranteed. Call to see one at

Sole Agents: Barrow, Brown & Co.

Carries Like a Boat



### Court Circular.

SAKAM CHANDRA, PARK.

Thursday 18th January.

To-day His Majesty the King was personally touched by the news of the death of Lady Abhai Raja who passed away at the residence of her husband, His Excellency Chao Phya Abhai Raja, Minister of Justice. The King was pleased to send to His Excellency a royal message of condolence.

### Italy's Merchant Fleet.

London, Jan. 1. A telegram from Rome says that Italy is assigning six millions sterling to the construction of merchantmen in 1917.



## THE Great War.

### German Raider Abroad.

(REUTERS TELEGRAM.)

London, Jan. 18.

The Admiralty reports that information from Pernambuco confirms the assumption that the following ships have been sunk by a German raider:—British: Dramatist, Raidnorshire, Minich, Netherby Hall, Mopnt Temple, King George, Voltaire, Georgie; French: Nantes, Anieries; Japanese: Hudson Maru. The raider arrived at Pernambuco on the 15th January with the masters and 237 of the crew of some of the lost vessels which were sunk between December 12 and January 12. It is also announced that the Saint Theodore was captured and a prize crew put on board and that the Yarrowdale was captured and sent away with four hundred men from the vessels that were sunk. There is no further news of their whereabouts.

(Havas Telegram.)

Paris, Jan. 18.

London official.—A German privateer has sunk in the Pacific, six British steamers, two French sailing ships and one Japanese steamer.

### A Russian Success.

(REUTERS TELEGRAM.)

London, Jan. 18.

A wireless Russian official says: We stormed and captured Vadeni. A dense counter-attack failed.

### Havas Telegrams.

Paris, Jan. 18.

British troops have occupied a series of enemy posts north of Beaucourt, on the Aisne, on a front of 500 metres.

Rome.—We repulsed in Tripoli, five thousand rebels attacking Suara and inflicted considerable losses.

Petrograd.—General Bolshoff has been nominated Minister of War. M. Barok has resigned his post as Minister of Finance. M. Sazonoff is going to London as Ambassador.

### Bangkok Lawn Tennis Club.

The following are the entries for this year's tournament:—

1. Ladies' Open Singles.  
(“Lady Paget” Bowl.)  
Mrs. Craig  
Mrs. Thornely
2. Men's Open Singles.  
(“D. M. Horne” Cup.)  
Watson Bye  
Grut “  
FitzGerald “  
Maxwell “  
Walsh “  
Cole Bye  
Nesbitt “  
Hendrick “  
Dering “
3. Men's Handicap Singles.  
plus 15 Heal Bye  
— 15 Miller “  
— 30 FitzGerald “  
— 15 Grut “  
— 30 Cole “  
plus 15 Maxwell “  
Scr. Watson “  
Scr. Dering “  
— 15 Nesbitt Bye  
— 15 Hendrick “  
— 30 Walsh “
4. Ladies' Handicap Doubles.  
— 30 Mrs. Brighthouse and  
Mrs. Thornely Bye  
plus 30 Mrs. Lyle & Mrs. Graham  
plus 30 Mrs. Wilson & Mrs. Duke
5. Men's Handicap Doubles.  
— 30 FitzGerald and Walsh  
plus 15 Watson and Heal “  
Scr. Dering and Nesbitt “  
— 30 Hewitt and Cole “  
Scr. Miller and de Berg “  
— 30 Craig and Buzard “  
plus 15 Brown and Maxwell “  
plus 15 Grut and Coultas “
6. Mixed Handicap Doubles.  
plus 15 Mr. and Mrs. Grut “  
— 30 Mrs. Craig and Cole “  
Scr. Mrs. Graham and Craig “  
plus 15 Mrs. Shand and Heal “  
— 30 Mrs. Lyle and Buzard “  
plus 30 Mrs. Duke and Coultas “  
— 15 Mrs. Wilson and Walsh “  
— 30 Mrs. Thornely & de Berg “

Rounds 1 & 2 of Nos. 2 & 3 to be finished by 31st Jan.

All other Matches, except Finals, to be played on or before 10th February.

## Ancient and Modern Town Planning in Bangkok.

(Communicated.)

The artificial mound crowned by a “prajedi” and known as Pukaw Thong has since many decades been a well known landmark on the map of Bangkok.

The shape of the ruins which now form the base of the Pukaw Thong or “golden mountain” show plainly that the building was previously intended as a Phra Prang (King Phra Nang Klao) somewhat similar to the Phra Prang at Wat Chaeng on the western bank of the river.

For some time past, on account of the faulty construction, the building collapsed before being completed (even of King Phra Nang Klao).

When King Mongkut ascended the throne the danger of renewed hostilities with Burma had not yet been removed. The King then feared that, in case of a hostile invasion, the enemy might, as during the last siege of Ayutthia, place artillery on the summit of the artificial hill, formed by the collapsed building. Consequently a winding pathway was built to the top, where some artillery and a body of soldiers were placed. Later on when the danger of a war with Burma no longer existed King Mongkut in adherence to the tradition that each capital of the Thai must have its “golden mountain” as a symbol of Mount Meru or abode of the gods in the Hinayana had the idea of transferring the ruins into their present shape, and during the reign of His Majesty the late King a prajedi was built on the summit to become the shrine for the imitation holy tooth relic conveyed to this country from Ceylon.

It is for the worship of this relic that the annual temple festival takes place at Pukaw Thong.

The Siamese architects and engineers who planned the towns of Krung Tonburi (west bank) and Krung Thep (east bank) have, there is no doubt, shown great ability in solving the problem of building a capital worthy of their country.

Tonburi being situated on the outer curve of the river was evidently placed in a bad strategical position as its defence might have afforded great difficulties.

Consequently the wise foresight of King Somdech Phra Buddha Jot Fah (1st monarch of the present dynasty) selected the land tongue formed by the great curve of the river as the site for the present capital of Bangkok.

Here to the North, West, and South the river forms a natural line of protection which was still further strengthened by a strong town wall with forts and bastions at convenient intervals.

To the East and North-east a canal was dug outside the present town wall and later on a line of forts flanked by the present Klong Palung waterway marked the second or outer line of defence against attacks from the land side.

Thus it may be seen that taking in mind the conditions and demands of those days (now some 130 years ago) the capital of Bangkok certainly formed a strong fortress.

But not only did the engineers of those days show much skill in solving strategical problems, but high praise is also due to them for the way in which they laid out a system of canals as chief veins of communication, and placed all prominent buildings at prominent points of these waterways.

Wat Somdet and Wat Chaeng on the other side of the river and Wat Saket with the Pukaw Thong or golden mound on this side of the river are characteristic examples of the remarkable way in which difficult architectural problems were solved.

Just opposite to the present Post Office No. 1 the Klong Somdech leads from the main river in a due western direction and on reaching the mighty temple of the same name, it branches off right and left thus forming a Latin “T.”

Coming up this waterway one beholds two fine, formidable prajedi (secularches) of two Somdech Chao Phya, brothers in the Suriwongse family and just in between them there arises in the background the mighty silhouette of the colossal Phra Prang that forms the centre of the temple.

Both during the early hours, when these shrines are lit up by the first rays of the rising sun and chiefly too at sunset when their noble forms are dipped into the glorious colours of the tropical evening glow, their aspect is simply beautiful and satisfies all demands of architecture from an æsthetic and artistic point of view.

The same holds true as regards the mighty but extremely elegant Phra Prang at Wat Arun (Wat Chaeng) on the western bank of the river and facing the Royal Grand Palace.

Its position exactly at the outer vertex of the river curve has been well selected, as it commands the entire pathway up and down the great stream. Yes, it is indeed the characteristic architectural culmination point in this most prominent part of the City.

And similar ideas of artistic conception have led the engineers and architects who succeeded to let the Pukaw Thong or “golden mound” become the conspicuous centre of a well planned system of waterways.

(Continued on Page 7.)

## New British War Loan.

The new loan consists of 5 per cent. 1929-1947 and 4 per cent. 1929-1942 interest on former payable 1st June and 1st December. Issue price 95 payable 5 per cent. on application 2nd March 15 per cent., 23rd March 15 per cent., 18th April 20 per cent., 30th May 20 per cent., 30th May 20 per cent. Issue four “per cent.” “income-tax-compounded” interest payable 15th April and 15th October issue price par: instalments as above except 20 per cent. on 23rd March.

Applications which may be for either loan must be for sums which are multiples of fifty pounds and may be for either fully paid allotments or instalment allotments. For the purpose of providing against depreciation in the market prices of the loans the Treasury undertake to set aside monthly a sum equal to one eighth of 1 per cent. of the amount of each loan to form a fund to be used for purchasing stock or bonds of either loan for cancellation whenever the market price falls below the issue price; whenever the unexpended balance of such fund reaches £10,000,000 the monthly payments will be for the time being suspended but they will be resumed as soon as the unexpended balance falls below £10,000,000; dividends on inscribed and registered stock of £2 per cent. war loan 1929-1947 will be paid without deduction of income tax but the income derived from such dividends will be assessable to income tax in the hands of the recipients at rates of tax appropriate to their respective incomes; dividends on the £4 per cent. loan will be exempt from liability to assessment to British income tax other than super-tax; for the purpose of super-tax and in computing total income for the purposes of exemption abatement reduced rates of income tax on earned or unearned income etcetera the income derived from such dividends will be treated as if the amount received represented the net income after reduction of income tax at the full normal rate; there will however be no title to repayment of income tax in respect of such untaxed dividends.

Stocks and bonds of these loans and the dividends payable from time to time in respect thereof will be exempt from all British taxation present or future if it is shown in the manner directed by the Treasury, that they are in the beneficial ownership of a person who is neither domiciled nor ordinarily resident in the United Kingdom of Great Britain and Ireland. Further the dividends payable from time to time in respect of stock and bonds of these loans will be exempt from British income tax, present or future, if it is shown in the manner directed by the Treasury that the stock or bonds are in the beneficial ownership of a person who is not ordinarily resident in the United Kingdom of Great Britain and Ireland without regard to the question of domicile.

Where a bond belongs to a holder entitled to exemption under these provisions, the relative coupons will be paid without deduction for income tax or other taxes if accompanied by a declaration of ownership in such form as may be required by the Treasury.

“Fully paid” allotments will be issued in one or other of the following forms as applicants may direct:—1. “Certificate of Inscription” of stock transferable in the stock transfer books; 2. “Register Certificate” of stock transferable by deed; 3. “Bond Certificate” exchangeable in due course for bonds.

“Instalment allotments” will be issued in the form of “allotment letters” which may either be retained until they are fully paid or may be exchanged for scrip certificates to bearer.

The instalments payable in respect of “Instalment Allotments” may be paid in full on or after March 2nd, 1917, under discount at the rate of 4 per cent. per annum. Where the payment in full is made between two instalment dates discount will be calculated as from the instalment date next succeeding the date of such full payment.

In case of default in payment of any instalment by its proper date, the deposit and any instalments previously paid will be liable to forfeiture.

Allotment letters and scrip certificates if paid in full may be exchanged for stock on or before the following dates, viz. £5 per cent. war loan 1929-1947 on or after May 2nd, 1917; £4 per cent. war loan 1929-1942 on or after March 13th, 1917.

The prospectus next deals with the conversion of the £4.10 per cent. war loan 1925-1945, £5 per cent. Exchequer bonds due Oct. 5, 1919 and 1921, £5 per cent. Exchequer bonds due Feb. 6, 1920.

Holders of the above issues, in fulfilment of the options granted in the several prospectuses relating thereto, may convert their holdings in whole or in part as on February 16th, 1917 and receive in lieu thereof £5 per cent. war loan 1929-1942 and or £4 per cent. war loan 1929-1942 at the rate of £105.53 £5 per cent. war loan 1929-1947 for each £100 converted, £100 £4 per cent. war loan 1929-1942 for each £100 converted. Holders desiring to convert must give notice in the prescribed form to the Bank of England not later than Feb. 16th 1917 but the actual conversion in

the Bank's books will not be completed until Monday July 2nd, 1917.

Between Feb. 17, 1917 and June 30, 1917 inclusive holdings to be converted will be unchanged as regards amount and description, except that holdings which to be converted into £5 per cent. war loan 1929-1947 will be designated “B” stock & bonds, and those to be converted into £4 per cent. war loan 1929-1942 will be designated “C” stock & bonds.

Holdings of these issues do not carry any rights of conversion into any further issue that may be made by His Majesty's Government.

The lists for both cash and conversion applications will be closed on Friday Feb. 16th 1917.

New advs. The Royal Turf Club of Siam has a notice re payments to the Club. The s.s. *Adani* will not sail till Monday. New model American motor-car just arrived to the order of the Siam Import Co. Gillette razors, blades etc. for sale at the Oriental store. The Siam Commercial Bank, Messrs. Whiteaway Laidlaw and Co., and Messrs. Kiam Hwa Hong notify the public that their establishments will be closed for the Chinese New Year.

## Rubber and Tin.

(“S. O.” SPECIAL CORRESPONDENT) Singapore, Jan. 19.

At the rubber auction there was a limited demand and prices in general dropped. Fine smoked sheet fetched \$149 and pale crepe \$146. 373 tons were sold.

Tin fetched \$91.37½.

LARGE supplies of rum are again being sent to the men at the front, its medicinal value, says the Port of London Authority, having been fully demonstrated to the military authorities. The liquor is sealed and sent by the Port Authority in gallon jars supplied by the War Office.

## Allies Have the Gold.

London, Jan. 9.—The Allies' holdings of gold are estimated at £557,702,000, compared with the £125,954,000 announced by the German Reichsbank. The British Empire's holdings are £164,945,000.

## PHATHANALAI THEATRE.

Special Engagement of the World Famous

## THE GREAT WILSON COMPANY.

China's Foremost Troupe of Remarkable Illusionists Jugglers, Gymnasts, Acrobats and Magicians.

## Twenty STAR ARTISTES Twenty

For a Short Season Only.

Don't miss this rare Opportunity.

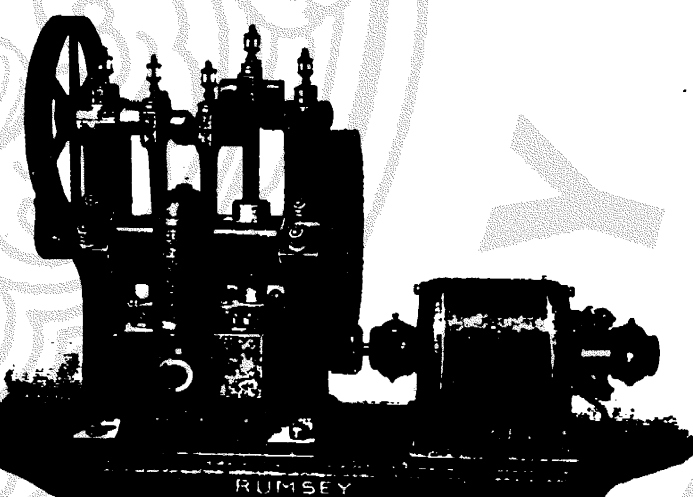
Changes of Programme—Every Saturday, Monday & Wednesday.

TO-NIGHT!

TO-NIGHT!!

Prices of Admission:—Tcs. 3, 2, 1 and Satangs 50 and 25. Front Box 6 Chairs Tcs. 20.—Upper Box and Chairs Tcs. 20.

## ELECTRIC MOTORS For all Purposes.



Cheap rates for Current. Complete Installation Including Belting Counter-shafts, Etc.

Siam Electricity Co., Ltd.

Wat Liep

Telephone 622

S.E.C. Electrical Store.

opp. British Legation

Telephone 434.

## INSURANCE

RISKS ACCEPTED

AT

Current Rates.

## FIRE.

Employers Liability Assurance Corporation Limited. The State Assurance Company, Limited. The China Fire Insurance Company, Limited. Liverpool and London and Globe Insurance Co., Ltd.

## LIFE.

China Mutual Life Insurance Company, Limited.

## MARINE.

World Marine and General Insurance Company, Ltd.

## MOTOR CAR RISKS.

Employers Liability Assurance Corporation Limited.

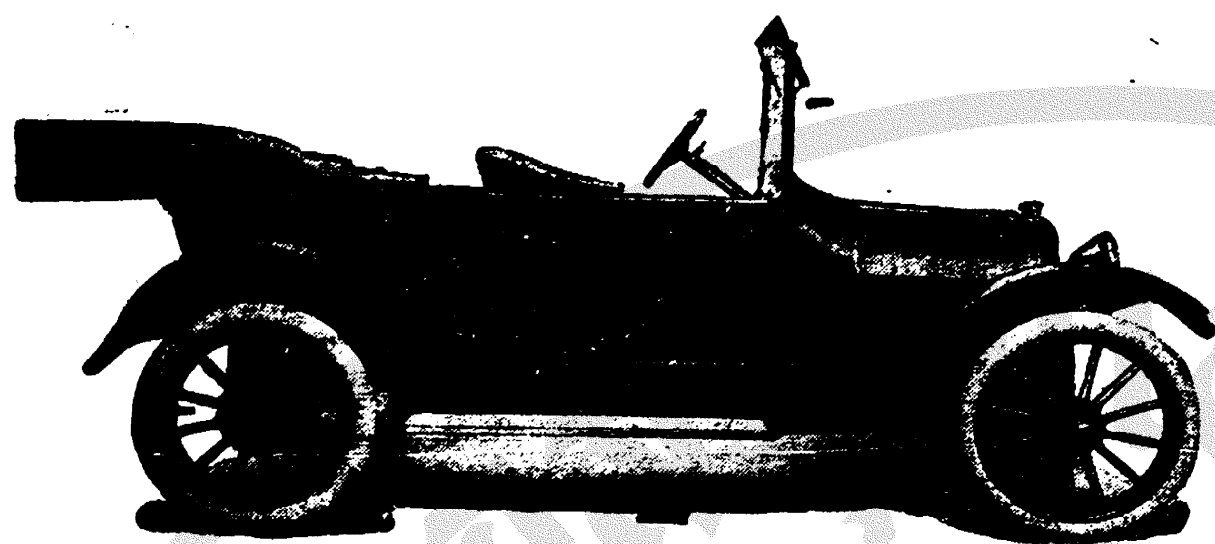
Louis T. Leonowens Ltd.

SOLE AGENTS FOR SIAM.

**ANOTHER  
NEW MODEL  
AMERICAN CAR**

**Just Arrived.**

**THE CHEVROLET**



**THE CHEVROLET**

**Electric Lights and Electric Starter.**

**Cheap price. Low running expenses.**

**Siam Import Co., Ltd.**

**Sikak Phya Sri-City.**

**Food and Peace.**

London, Dec. 14.—It appears likely that the German peace proposal is not unconnected with the internal situation in Germany, which is steadily becoming worse, and which the much vaunted German military achievements have done nothing to improve. It is certain that the proposal coincides with the rapidly growing scarcity of food, regarding which the German newspapers are full of the most bitter complaints. They apparently have now realised that no relief can be expected from Romania.

The Berliner Tageblatt, in a remarkably plain-spoken article, says: "When one looks at things as they are, one is bound to say that the food difficulties for the great mass of the people have increased considerably. Six months ago we were promised a pound and a half of potatoes daily; this is reduced to three quarters of a pound. The bread ration of four pounds weekly is only obtainable with difficulty. It is impossible to overlook the inadequacy of the meat supply. If one is lucky one gets two ounces of butter weekly, while cheese is unknown to the masses. Only invalids and children get milk. Meanwhile many things formerly to be purchased have vanished, and maximum prices are screwed higher and higher."

The Socialist journal Vorwaerts, referring to the recent debate in the Prussian Diet, angrily remarks: "We cannot dine on fine words," and complains that while the people were told that the food difficulties must increase, especially after Easter, no details are given. The paper declares that figures would have been better than general phrases about "the terrible potato harvest."

During the debate Herr Leniz, the Minister of Finance, said the increasing cost of living was constantly involving the higher classes of the population in difficulties.

Recent reports indicate that the German authorities are endeavouring more and more to drive the people to communal feeding. The Tageblatt refers to this as "compulsory feeding." The Cologne Gazette, after alluding to the semi-failure of the potato crop, says the strictest possible economy is necessary if the Empire is to hold out to the end.

These extracts from responsible newspapers are the more significant when the rigorous censorship is considered. They appear to indicate an economic situation becoming more menacing, and which constitutes a factor in the war situation the importance of which may as easily be underestimated as over estimated.

The Frankfurter Zeitung, discussing the peace proposals, says: "We do not demand or command as victors, but make a proposal, expecting in reply counter-proposals. The precise object of our proposal is to bring the belligerents to a common council table, where misunderstandings can be cleared up."

Other messages from Berlin remark that the moderation of the terms of peace is guaranteed by the fact that in making the proposal the Imperial Chancellor has the whole nation behind him.

Teuton diplomats in Washington assert that Germany is ready to discuss the question of disarmament.

The Kaiser is now in Berlin conferring with Marshal von Hindenburg and the heads of the German States. The peace plans will not be disclosed until the Kaiser's replies to the German proposals have been received.

London, Dec. 14.—According to information published in the Daily Telegraph, stated to have been obtained from a reliable source, the Central Powers have just proposed peace to Belgium on the following understanding.

Belgium is to immediately accept peace, in return for which her territory shall be restored, her independence guaranteed, and assistance will be given her in the task of effecting an economic rehabilitation. Should the proposal be refused, all monuments and public buildings and, if necessary, even cities, in Belgium will be destroyed.

**Screw On Greece.**

Athens, Jan. 9.—The Allies' Note gives guarantees against an extension of the revolutionary movement.

London, Jan. 10.—That swifter action towards Greece will result from the Rome Conference appears from a statement made by M. Briand on his return to Paris, that he was fully satisfied with Italy's strong resolution. He added that Italy's attitude had never been doubtful, but a complete understanding had now been reached on matters of detail.

It is assumed in the London papers that some extension of the Allied purpose in Greece, beyond that in which Italy previously joined, is about to be made.

Dr. Dillon declares that the Allies, with the exception of Italy, have throughout misunderstood the Greek imbroglio, and failed to deal frankly and resolutely with King Constantine as an enemy. Their blockade has inflicted great hardships on the population but left the monarch unmoved.

The "Daily Telegraph," commenting on Dr. Dillon's remarks, says that it anticipates action which will not leave King Constantine unmoved.

**CIDER**

**H. P. BULMER'S**

Famous Sparkling Herefordshire Cider is most refreshing and an ideal drink for the Tropics.

Guaranteed to be the pure juice of the apple only and is not artificially aerated.

OBTAINABLE FROM

**The Borneo Company, Ltd.**

**Bangkok.**



(Continued from Page 5.)

It is for these and similar reasons that land prices within or near to the city have reached an exorbitant and

Why don't they follow the splend

PROGR  
RAMME  
CHANG  
ED

Phathanakorn



Cinematograph

SPECIAL PROGRAMME FOR

**THE CHINESE NEW YEAR**

The Well-known and Famous Chinese Film Play -- The Unfortunate Boy

3 Reels **SUT CHOO PAO** 3 Reels

A Strong Chinese Drama of high Merit, gorgeous Chinese settings,  
real Chinese actors and actresses.

A Capital Photoplay

3 parts **A WIFE'S FORGIVENESS** 3 parts

A Dramatic Story Portraying Woman's Chastity, Beautiful Settings,  
Convincing Action from Start to Finish.

A New Two-reel Keystone Comedy

**OUR DARE-DEVIL CHIEF**

The World's Greatest Sea Fight

**THE JUTLAND BATTLE**

**AT ALL STORES**

**SOLE AGENT FOR SIAM**

**THE BANGKOK DOCK MOTOR GARAGE.**

**SOUTHERN LINE.** In force from 9th October, 1916.

Tues. Thurs. Sats.					daily					daily					daily					Fria. Suna.				
a.m.					p.m.					a.m.					p.m.					a.m.				
Bangkok Noi ...	Dep.	7.30	8.25		1.20	2.10				Chumpon ...	Dep.									7.45				
M. Nakon Patom ...	"	8.56	10.13		2.45	4.27				Praachuap Kirikan	Arr.									p.m.				
Ban Pong ...	"	9.33	10.58		3.26	5.38				"	Dep.									2.26				
Potaram ...	"	9.55	11.22		4.—	6.17				Prao Kao ...	"							9. 5		2.41				
Ratburi ...	Arr.	10.26	11.57		4.31	6.59				Wang Phong ...	Arr.					6. 5				4.69				
										"	Dep.					6.10		10.59		5. 5				
Petchaburi ...	Dep.	10.36	12.10		4.41					Hua Hin ...	Arr.					6.18		11.34						
"	Arr.	12.—	1.45		6.29					"	Arr.					6.87		11.46						
										"	Dep.					7. 5		11.54						
Hua Hin ...	Dep.	12.12	2.17							Petchaburi ...	Arr.					9.37		1.43						
"	Arr.	1.59	4.47							"	Dep.					7.10		9.52		1.56				
Wang Phong ...	Dep.	2. 5	4.57							Ratburi ...	Arr.					9.10		11.40		3.18				
"	Arr.	2.37	5.37																					
"	Dep.	2.48	5.42							Potaram ...	Dep.	6. 5	9.22	1.30	3.28									
Prao Kao ...	Arr.	...	5.47					6.25		"	Arr.	6.59	9.56	2. 6	4. 1									
Praachuap Kirikan ...	Arr.	4.38						8.46		Ban Pong ...	"	7.43	10.19	2.43	4.25									
"	Dep.							8.56		M. Nakon Patom	"	9. 2	11.—	3.17	5. 6									
								p.m.																
Chumpon ...	Arr.							3.53		Bangkok Noi ...	Arr.	11.12	12.23	4.53	6.28									

Chumpon-Tung Song on Tuesdays, Thurs. & Sats.					Tung Song-Chumpon on Mondays, Weds and Fri.					Tung Song-Trang daily					Trang-Tung Song daily				
a.m.					p.m.					a.m.					p.m.				
Chumpon	Dep.	6.15			Tung Song	Dep.	6.45			Tung Song	Dep.	2.20			Trang	Dep.	8.20		
Langsuen	Arr.	9.18			Sarashtia Dhani	Arr.	11.37			Trang	Arr.	5.30			Tung Song	Dep.	11.23		
"	Dep.	9.28			"	Dep.	12. 2												
Sarashtia Dhani	Arr.	1. 4			Langsuen	Arr.	3.37												
"	Dep.	1.29			"	Dep.	3.47												
Tung Song	Arr.	6.23			Chumpon	Arr.	6.19												

Tung Song-Nakon Srihararaj daily except Monday					Nakon Srihararaj-Tung Song daily except Monday					Tung Song-Singora Wed. Fridays & Sundays					Singora-Tung Song Tuesdays, Thursdays & Sun.				
a.m.					p.m.					a.m.					p.m.				
Tung Song Dep.	6.30				N. Srihararaj	Dep.	11.—	3.—		Tung Song	Dep.	11.50			Singora	Dep.	7.20		
N. Junction	7.37		1.20		"	Dep.	12.13	4.15		N. Junction	Dep.	12.40			Patsalang	Arr.	7.48		
N. Srihararaj	Arr.	8.50	2.33		N. Junction	Arr.	5.20			Patsalang	Dep.	12.55			"	Dep.	10.58		
					Tung Song Arr.					"	Dep.	2.47			N. Junction	Arr.	12.40		
										Singora	Arr.	6.15			"	Dep.	1. 5		
															Tung Song	Arr.	1.55		



**Rebellion in Sumatra.**

("S. O." SPECIAL CORRESPONDENT.)  
Singapore, Jan. 18.

It appears that the new rebellion in Sumatra assumed fairly considerable proportions. It is believed the situation is now in hand.

**American Cruiser Runs Ashore.**

("S. O." SPECIAL CORRESPONDENT.)  
Singapore, Jan. 18.

The American cruiser *Minneapolis* has gone ashore at Eureka and it is feared she is a total wreck.

**U-Boat Exploits.**

London, Jan. 9.—The Berlin official claims that a German submarine torpedoed and sank in the Aegean on Dec. 27 the convoyed French battleship *Gaulois*, in the Mediterranean on Jan. 1, the *Ivernia*—a fully laden British troop transport conveyed by destroyers, and on Jan 8 an armed heavily laden transport of six thousand tons.

**Petrograd Puzzle**

Petrograd, Jan. 9.—The Times correspondent says that there are growing indications of another change in the Premiership. The names of M. Pokrovsky and Count Bobrinsky are mentioned.

London, Jan. 10.—The Ministerial changes in Russia are wholly unexpected and so far unexplainable.

London, Jan. 11.—There is much speculation as to the meaning of the changes in Russia.

The Daily Mail has a Petrograd wire stating that Prince Goltzine is an ex-governor of Tver, where his policy was reactionary. Interviewed, he said that he considered essential to co-operate with parliamentary institutions. The war must continue till complete victory.

The Daily News Petrograd correspondent states that M. Trepoff resigned because there was no prospect of carrying out his wishes in the Duma, the assembly of nobles and the press for real collaboration between the administrations and the people.

The "Ruski-Yuvolov" concludes a gloomy leader devoted to the changes by saying: "Russia has suffered much lately, but we have never before realized so vividly that the Fatherland is endangered."

**Ancient and Modern Town Planning in Bangkok.**

(Continued from page 7.)

example set by the Siam Electricity Company?

To speak short and sweet if the town is to be embellished by pretty new quarters such as the site of the new Central Station, then by all means let the authorities act in unison and really create a quarter of the city which will in every respect be worthy of a great capital.

The same holds true as regards the district surrounding the Pakaw Thong or "golden mountain" at Wat Saket.

This quarter, situated in one of the main centres of the town, now offers an aspect which is a terrible mixture of beauty and ugliness.

A far seeing policy of town planning ought not to allow this temple and its fine old park like grounds to be the site for the activity of certain traders.

Do away with these fearful abodes built up of rotten boards, rusty petroleum tins, and rests of corrugated iron! Leave only the picturesque old houses of the monks, which together with the other temple buildings ought speedily to be repaired. Leave open the entire space between the Mahanik Canal to the North, the new road and bridge to the West and North-west, and the roads to South and East. Within this space plan a fine public park containing in its centre the golden mountain, the finest sight-seeing place of Bangkok.

Thus Wat Saket with its new park would be joined up to the Dusit District and become one of the lungs of the city.

Naturally the present cemetery ought likewise to be removed from the neighbourhood of the city and be placed far away from human abodes.

Every physician will concur with me in the opinion, that this cemetery is a dangerous breeding place of various diseases.

By the by why is there in this city, where practically all the dead are burned, why is there no modern crematorium fitted out with up-to-date appliances such as may now be found in many European and American cities.

In such a crematorium the mourners might, just as they did formerly, add to the funeral pile their gifts of sandal wood, incense etc., without hampering the process of modern cremation.

Several years ago there was, I remember, a Siamese gentleman of high rank who fostered such ideas, but then, alas, nothing came of the scheme.

Through the development of Bangkok many fine old sights have vanished and again no doubt many ugly aspects have also been removed.

But in developing a city one ought by all means to take into consideration

prominent ancient buildings and not simply let them decay or tear them down wholesale, or let them disappear behind ugly "rong tiao" houses.

Many of these interesting ancient objects must certainly fall. Thus for instance parts of the town wall.

But again I am of opinion that certain historical and prominent parts of this wall should be left as witness of former days, for example some of the ancient gates and forts.

The fort at the Makawir Bridge near the entrance to the Dusit District might well be transformed into a resting and refreshment place for sight-seers, as is done in other countries.

I have noticed that something is now being done to repair old temples, thus for instance Wat Poh. This work of the Krom Silapakorn must be greeted with satisfaction by all friends of Art. I however beg to intimate that this work of restoration is here and there done in a somewhat superficial way and in several instances the characteristic features given to the temples by their original builders are simply changed or lost altogether.

May I for instance point out that in Siamese Architecture the chain line or hanging line is prominent everywhere. It may for instance be seen in the shape of the roof and the window-sills etc.

All Siamese buildings moreover show lines converging in an upward direction. These are features known by any man in the street. Why then are they not strictly adhered to in the work of restoration?

But, alas, the Siamese rarely build or repair their temples in our days.

This work is mostly done by Chinese and sometimes too under European supervision.

Well, it is easy enough to draw a straight line, if you have a straight ruler, but it is a little more difficult to imitate the swing and characteristic elegance of the Thai style.

At present there seems to be too much liberty given to all sorts of naklengs, who believe the temples to be their special abode or the grounds for their rowdy games. By the by many of these fellows are rests of the Huey Lottery and gambling houses.

Even in the beautiful gallery of Wat Phrakasorn containing the well known wall paintings, showing episodes from the Ramayana, I noticed that some of these fine pictures, in spite of being protected by net wiring, had been stained by spitting betel-chew at them.

A visitor to a cathedral or cloister in Europe has not to pay a tithe for every gate or door he wishes to pass through. Not so in Bangkok! Here in many cases some Nakleng runs up and demands entrance fees, which often reach respectable figures. These fel-

lows are not the ordinary guardians of the Both or Vihara, who are generally modest men; but they are regular loafers, who molest visitors and do all sorts of dark work within the temple precincts.

A friend of mine some weeks ago went to see Wat Poh, but on reaching the 4th trial for gate money his artistic ardour suddenly vanished and he went home disgusted.

Why not put a collecting box at some prominent place under the supervision of a priest. I am sure that every visitor on leaving the temple would be quite glad to give a generous present not to the rowdies and naklengs but to the legal temple-inhabitants, the priests.

There are still many other things that I should like to point out, but it would lead me too far.

However in the introduction to this letter I pointed out that once a well planned set of broad and deep canals formed the main arteries of communication in this city, and as a matter of fact continue to do so up to the present time.

It is therefore to be regretted that these waterways are left to be filled with mud and dirt, and are thus gradually becoming unpassable during the falling of the tide.

For this reason and for sanitary reasons too it would indeed be a great boon to the city, if these canals were speedily excavated by dredgers to their original depth. The earth thus obtained might well be used for raising low lying streets, for instance the roads behind Wat Thep-Sirindr, which are frequently flooded during the high-water season.

Moreover I think it is high time for the sanitary authorities to take steps for removing the numerous lavatories, that are calmly placed on long stalks hovering about the canals and waterways.

It has often been a puzzle to me how the otherwise painfully clean Siamese are actually able to take a bath quite near to these evil huts.

Just let the River Police and the Medical Officer of Health go on a systematic inspection along the canals, large and small, and they will find ample work to do, work which will not only tend to improve sanitation but will be of value in many other respects.

There is at present a rumour that a General Sanitation and Building Law is now being prepared and will soon come into force.

I only hope that this rumour is true, because such a law will prove to be of the utmost importance for the welfare and embellishment not only of Bangkok but of all other towns and communities in the Kingdom of Siam.

Yours sincerely,  
MAECHUMAS.  
Bangkok, 16th January, 1917.

**LOTTERY**

IN AID OF THE

**FRENCH RED CROSS.**

The drawing of the above will take place on

**Saturday the 27th**  
at 4-30 p.m.

AT THE  
**ASSUMPTION COLLEGE**  
**EXAMINATION HALL.**

A few remaining tickets are still on sale at the INTERNATIONAL STORE up to 2 p.m. on Thursday 25th.

20-25.

**Telegraph Lines.**

The Post and Telegraph Department reports that Malay Peninsula Local line is interrupted between Seremban and Langkasan. Krabindr line is in good order as far of Patniew. Other lines are in order.

**Bangkok Mails Close.**

SONGKHLA.  
Monday 22nd 10 a.m. a.s. Asiang

**Exchange Rates.****To-day's Quotations.**

LONDON—  
Bank Bills, demand 1/6 7/16  
Bank Bills, 3 months' sight

PARIS—  
Bank Bills, demand 2.05

GERMANY—  
Bank Bills, demand

NEW YORK—  
Bank Bills, demand U. S. A.

INDIA—  
Bank Bills, demand Rs. 111 1/4

SINGAPORE—  
Bank Bills, demand \$65 1/2

HONGKONG—  
Bank Bills, demand, \$ 65 3/4

YOKOHAMA & KOBE...  
Bank Bills, demand, ¥70 1/2

NOTE:—The rate of interest on Advance Bills has been reduced to 6 per cent. per annum.

Equivalent of Exchange Demand London in Siamese Currency.—  
Tm. 13.08.—(Bank Rate)

# BEAVER BRAND MILK.

The product of government inspected cows, fed in the rich valleys of

**BRITISH COLUMBIA.**

The Milk in addition to being sterilized and pasteurized, is homogenized by a

**SPECIAL PATENT PROCESS**

which renders the Milk more easily digested, and causes the

**CREAM**

to be evenly distributed throughout the entire contents. It is this feature which makes

**Beaver Brand the Most Perfect Milk Known**

**GUARANTEED ABSOLUTELY PURE AND FREE FROM ALL BACTERIA.**

**KEEPS INDEFINITELY IN ALL CLIMATES.**

**QUALITY BETTER**

**PRICE LOWER**

than any other well known Brand.

# STEPHENS, PAUL & Co.

**SOLE IMPORTERS.**

Printed and published by S. Foulson for the "SIAM OBSERVER" Press Ltd., Oriental Avenue, Bangkok.